





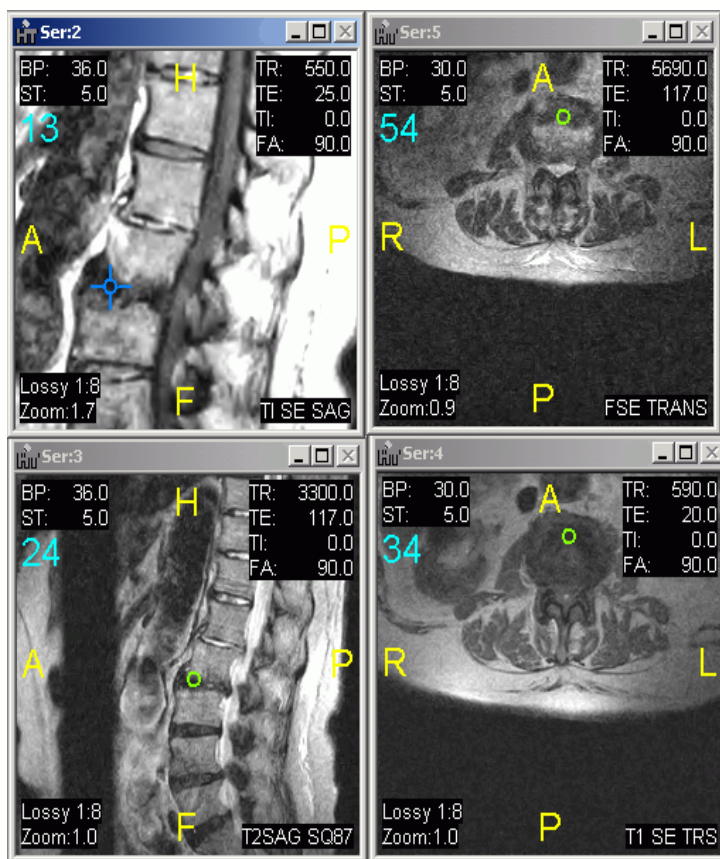
PACS triangulation tool: pinpoint an area of interest in another plane

Triangulation is a helpful PACS tool that allows you to locate a region of interest in another plane simultaneously and to follow that region of interest (such as a mass or anatomical structure) specifically and define its outer limits.

With Triangulation, you can click a region of interest in one plane and see that precise region identified in the orthogonal (perpendicular) plane. Further, you can continue to drag the selection to see where that region ends in the other plane.

To enable and use triangulation:

- Click the Triangulation button  in the Image Viewer toolbar, The mouse pointer changes shape to  indicate that this feature is enabled.
- Click in the image that includes your region of interest. In that active series, the cursor changes to a cross-hairs shape  to indicate that you are pinpointing the desired area. A corresponding symbol  is displayed in the series that display the orthogonal plane; that symbol moves in concert with the cross-hairs in the active series.
- Drag the cursor (or use the scroll wheel on your mouse) to see updates to all series and to track the region of interest.



In the above example, notice that the series on the left (sagittal) is the active series, with the cross-hairs shape in the disc between two vertebrae. The series on the right show that same position in the axial cuts.

For more information, or to schedule a demonstration, please contact Allyson at 360-479-6555 or allyson@olympicradiology.com