

## Olympic Radiology's PACS Improves Efficiency in ENT Practice



North Kitsap ENT/Kitsap Facial Plastic Surgery in Poulsbo relies on Olympic Radiology's PACS to make daily operations easier.

PACS stands for picture archiving and communications system. PACS can replace hard-copy films or CD images. The online system manages all images and reports in one application that may be viewed from any location.

North Kitsap ENT back office manager, Kim Marshall, describes the system as "really convenient". She likes the ease of use of PACS, and notes that the user-friendly system does not require a lot of technical knowledge to navigate. Dr. Michael Jungkeit and staff each have their own logins, and can access patient images and reports when needed.

One of the primary reasons the office installed large wall-mounted, flat panel monitors in each exam room is to expedite access to Olympic Radiology's PACS at the chairside. A staff member

logs on to PACS, and pulls up the patient's study for the doctor. The patients like to be able to see their images as Dr. Jungkeit reviews and discusses possible findings with them. They are assured that the office is using the highest level of imaging technology to help diagnose and treat their conditions.

The anytime, anywhere online access has allowed Dr. Jungkeit to view reports and images from home, or other remote locations. This has been especially helpful to him in the operating room at the Pacific Surgery Center in Poulsbo.

Sometimes a patient may have had prior studies completed at Olympic Radiology that the doctor would like to see for comparison. With a quick phone call to our office, temporary access to those images and reports are available within minutes.

With all information stored in PACS, there is no need to store patient films or even CDs. If needed, images can be printed or burned to CD from your PC.

Olympic Radiology is committed to providing our referring clinicians and patients with the highest level of technology to assess health conditions and streamline workflow. With PACS, referring offices have quick access to reports and images in one easy to use solution.

To learn more about PACS, please contact Allyson Metters at 360.479.6555 or [allyson@olympicradiology.com](mailto:allyson@olympicradiology.com).

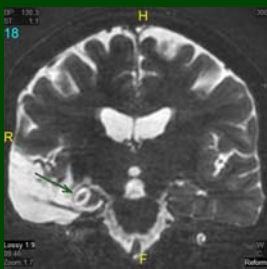
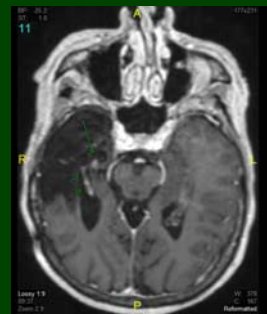
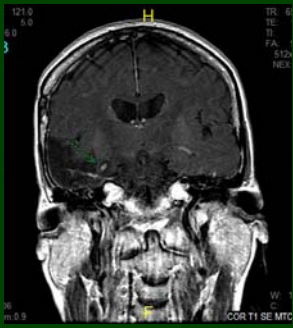
### INSIDE THIS ISSUE:

PACS IN ACTION

CASE STUDY— COMPARATIVE MRI FINDINGS

TAKE THE CHALLENGE

A LETTER FROM THE RADIOLOGIST



## Case Study

### History

60 year old female with history of seizure disorder status post excision of an anterior temporal tumor. The patient recently underwent an MRI at another facility. The outside interpretation of that exam described a nodular focus of abnormal enhancement worrisome for tumor recurrence. The patient was referred to Olympic Radiology for an MRI with volumetric imaging.

### MRI Findings

The area of concern at that time of the previous MRI represents enhancing choroid plexus within the temporal horn of the right lateral ventricle, which on the volume T1 post gadolinium thin-slice study clearly is contiguous with the right temporal choroid plexus. Volumetric T2 images show the nodule to be present within the temporal horn of the lateral ventricle. There is no tumor recurrence.

### Discussion

The T1 and T2 volumetric imaging capabilities of Olympic Radiology's Achieva MR system allow creation of reformats in any plane that best shows the anatomy and or pathology. Our radiologist's definitive finding prevents additional, unnecessary tests or expense for the patient.

Olympic Radiology brings added value to medical imaging and peace of mind to patients.

## Check Your Health and Take the Challenge



Join the American Cancer Society's Great American Health Challenge. Implement lifestyle changes to improve your health and reduce your risk of disease. The challenge is divided into categories designed to help Americans become more physically active, eat healthy, quit smoking, and get regular cancer screening tests.

The first step in the process is the Great American Health Check. This five-minute online quiz can develop a personalized action plan to discuss with your doctor.

After you and your doctor have discussed your plan, you can join the Get Active Challenge to increase your activity level. You set personal goals, and

the website provides you with the tools to motivate you and keep you on track. The Eat Right Challenge helps you understand how food choices influence your health risks. Get tips, tools, and resources to help improve your eating habits.

To begin, go to [www.cancer.org/healthcheck](http://www.cancer.org/healthcheck)

# A Letter From the Radiologist



**Bradley Brown, MD**  
Olympic Radiology

In our efforts to remain the Center of Excellence for Medical Imaging in the West Puget Sound, Olympic Radiology has added the GE Logiq 9 ultrasound. The GE Logiq 9 provides new technology and enhancements which produce cleaner, sharper images of internal organs and pathologic lesions.

Sometimes called sonography, ultrasound uses high-frequency sound waves and a computer to create images of blood vessels, tissues, and organs. Ultrasounds are used to view internal organs as they function, and to assess blood flow through various vessels.

Ultrasound procedures are often used to examine many parts of the body such as the abdomen, breasts, pelvis, prostate, scrotum, thyroid and parathyroid, and the vascular system. During pregnancy, ultrasounds are performed to evaluate the development of the fetus. It is one of the most commonly used diagnostic tools as it is rela-

tively inexpensive, and poses no known risks to the patient.

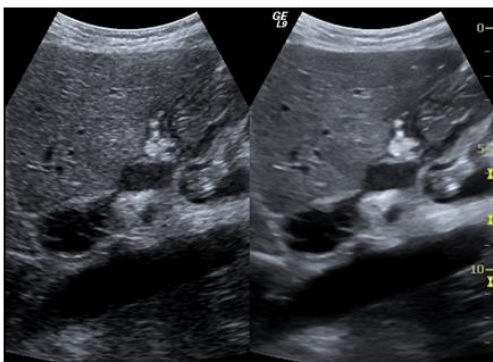
Olympic Radiology's new ultrasound produces clearer images, due to the system's advanced Speckle Reduction Imaging capabilities. Speckle is an inherent imaging artifact that appears as "graininess" and often obscures anatomy in ultrasound images. Speckle reduction produces a sharper view of fine details when examining organs such as the thyroid and superficial parts like muscles.

The superior color Doppler capabilities of the new system help see and evaluate possible blockages to blood flow resulting from clots, or narrowing of vessels.

Diagnostic medical ultrasound is a safe and helpful procedure that is useful for patients of all ages and for a variety of medical indications. At Olympic Radiology

Associates we are committed to offering current technology combined with experienced, certified medical sonographers and Board specialized physicians to provide patients the best in health care.

*Dr. Bradley Brown is an American Board of Radiology certified physician subspecialty trained in ultrasound and body imaging. Dr. Brown has served the Kitsap County medical community for 12 years.*



**Side-by-side comparison of a pancreatic pseudocyst with Speckle Reduction Imaging off on the left and activated on the right**

**Speckle Reduction Imaging produces a sharper view of fine details when examining organs such as the thyroid and superficial parts like muscles**

## Diagnostic Medical Ultrasound

- ...# Used to view internal organs as they function
- ...# Can assess blood flow through various vessels
- ...# One of the most commonly used diagnostic tools
- ...# Relatively inexpensive compared to other diagnostic tests
- ...# Useful for patients of all ages and for a variety of medical indications

# OLYMPIC RADIOLOGY

2700 Clare Avenue  
Bremerton, WA 98310

Questions? Contact Allyson Metters  
(360) 479-6555  
allyson@olympicradiology.com

The Center of Excellence for Medical Imaging  
in the West Puget Sound

Visit us at [www.OlympicRadiology.com](http://www.OlympicRadiology.com)

## Olympic Radiology's American Board of Radiology Certified Physicians

**Steven Bell, MD**



Vascular & Interventional Fellowship

*Serving Kitsap County for 12 years*

**Specialties:**

Musculoskeletal  
Body Imaging  
Angiography and Interventional Radiology

**Education:**

**Doctor of Medicine**

University of Wisconsin

**Internship**

UC Irvine Med. Center, General Surgery

**Residency**

Loma Linda University Medical Center,  
Diagnostic Radiology

**Fellowship**

Loma Linda University Medical Center,  
Angiography and Interventional Radiology

**Bradley Brown, MD**



Body Imaging & Ultrasound Fellowship

*Serving Kitsap County for 12 years*

**Specialties:**

Ultrasound  
Body Imaging  
Musculoskeletal

**Education:**

**Doctor of Medicine**

University of South Carolina

**Internship**

LDS Hospital, Utah, Transitional

**Residency**

UC Davis Medical Center,  
Diagnostic Radiology

**Fellowship**

UC Davis Medical Center,  
Ultrasound with Intervention

**James Rohlfing, MD**



Neuroradiology Fellowship

*Serving Kitsap County for 16 years*

**Specialties:**

Neuroradiology (Subspecialty Certification American  
Board of Radiology)  
Body Imaging  
Musculoskeletal

**Education:**

**Doctor of Medicine**

University of Washington

**Internship**

University of Utah, Internal Medicine

**Residency**

University of Utah,  
Diagnostic Radiology

**Fellowship**

University of Washington,  
Neuroradiology